

## Interactive Board Bracket With Motorized Lifting Mechanism

The ideal choice for schools, conference and other applications that need a fixed installation. It brings the interactive board to multiple heights without any tools or technical expertise. The innovative design of the Momentum motorized lift bracket allows the user to reposition their interactive board and projector at same time. It offers a range of vertical height adjustments, maintaining the projector-to-board calibration. Momentum's interactive board motorized lift bracket is a universal fitting for almost all boards available in the market today.

### Motorized Lifting Mechanism

The quick, smooth and quite operation of the motorized lifting mechanism allows for height adjustment during a presentation without disruption.

### Improved projector performance and integration

When securely installed on the wall, Momentum's motorized lift bracket integrates the short throw or ultra short throw projector with interactive board for simple installation and use. At the lowest position, projector buttons can be easily reached. The projector installs in a keystone-neutral position for optimum focus and clarity while minimizing the presenter's shadow.

- No more hassle with overhead ceiling mounts and in-ceiling cables.
- No more hassle with loose desktop projectors and cables running across the floor.

With Momentum's motorized lift bracket everything is integrated and cables are concealed.

### Simplicity of use

At the touch of a button, you can lower or raise the board and projector. As you choose the height you want, everything stays calibrated.

### Other features

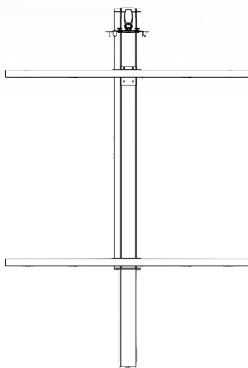
- Frame structure -Heavy duty steel construction
- Finishing with high quality epoxy powder grey
- Universal head mount for fixing most of the popular brand of the projectors available in the market
- Hex key on head mount for added security
- Optional Item - Laptop tray

### Warranty

Three (3) years warranty\*



Front view



Side view



Rear view

